

# Welcome to the Team Teach



## Knowledge Hub

**Find out how the Knowledge Hub can support your ongoing professional development and shape your everyday practice.**

Have you ever wondered how the Team Teach Knowledge Hub can support your practice and empower your teams?

This online, members-only platform is home to a comprehensive digital library of resources, created to provide 24/7 support for you and your staff around behaviour.

With over 100 hours of regularly updated content and flexible tools for real-world use, the Knowledge Hub enables ongoing professional development, helping you to embed calm, consistent and relational practice in your organisation, long after training has finished.



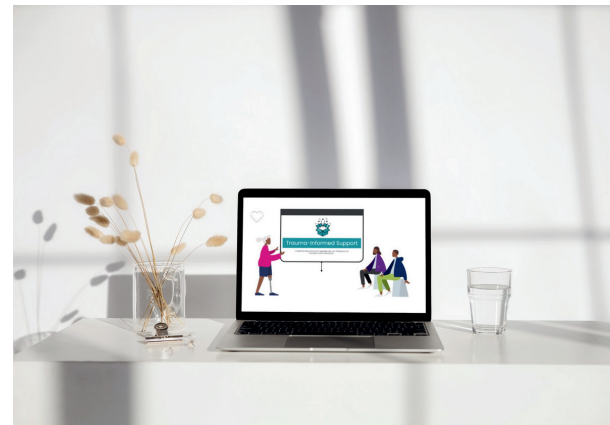
# What is in the Knowledge Hub?



Accessible on any internet-connected device, the Team Teach Knowledge Hub brings together practical resources to save time, support consistency and strengthen behaviour support across your setting:

- ✓ Articles
- ✓ Poster Packs
- ✓ Editable Templates
- ✓ Support Guides
- ✓ Checklists
- ✓ Self-Audit Tools
- ✓ Staff Induction Packs
- ✓ Staff Meeting Materials
- ✓ Behaviour Scenarios
- ✓ Law & Guidance
- ✓ Resource Packs
- ✓ Assembly Resources
- ✓ 1:1 Activities
- ✓ Video Series
- ✓ Webinar Recordings
- ✓ Podcasts

*What I like about the Knowledge Hub is that all of the information is in one place and it's easy to access and navigate.*



*I appreciate how easy it is to access resources when I need guidance during challenging moments.*

# Who is the Knowledge Hub for?



The Team Teach Knowledge Hub is designed for any professional involved in supporting behaviour across education, healthcare, and social care settings, including:

Headteachers and school leaders



Teachers and teaching assistants



Staff mentors and coaches



Managers and service leads



Frontline support staff



Team Teach trainers



## Resources can support:

Inspection  
Preparation

Whole-staff  
CPD

Staff  
Induction

Mentoring &  
Coaching

Individual  
CPD

Policy  
Review



# Benefits



- ✓ **Current and up-to-date:** Weekly updates and 100+ hours of curated resources to reduce time spent searching for information
- ✓ **Supports every role, on any device:** Wide range of ready-to-use resources, accessible anytime, anywhere
- ✓ **Extends learning beyond training:** Ongoing access supports continuous professional development long after training ends
- ✓ **Promotes confidence and consistency:** Regularly refreshed content helps teams apply best practice with confidence
- ✓ **Delivers lasting, real-world impact:** Enables sustained positive change in everyday practice and outcomes for those you support

## Get in touch today!

To find out more about Team Teach and the Knowledge Hub, please contact us:

 [info@teamteach.com](mailto:info@teamteach.com)

 +44 (0) 203 746 0938

 [www.teamteach.com](http://www.teamteach.com)

